

New School Assignments for the 2012-13 School Year

Construction in the Wentzville School District continues on schedule, and 20 new classrooms at South Middle School will be ready for students in August of 2012. In order to alleviate crowding at Frontier Middle School and in preparation for the opening of the new high school in 2013, the District has begun the process of changing some school attendance assignments. This is not a school boundary change for the elementary schools, but a change in school assignments for some middle and high school students. With nine elementary schools, three middle schools and soon a third high school, the District has an opportunity to realign attendance assignments so all of the students from three elementary schools attend one middle school, and all of those students attend one high school. To achieve that desired result, a committee organized by the Administrative Services Department and made up of one parent representative from each school in the district has been organized to determine school attendance assignments. The School Assignment Committee was given the following charge:

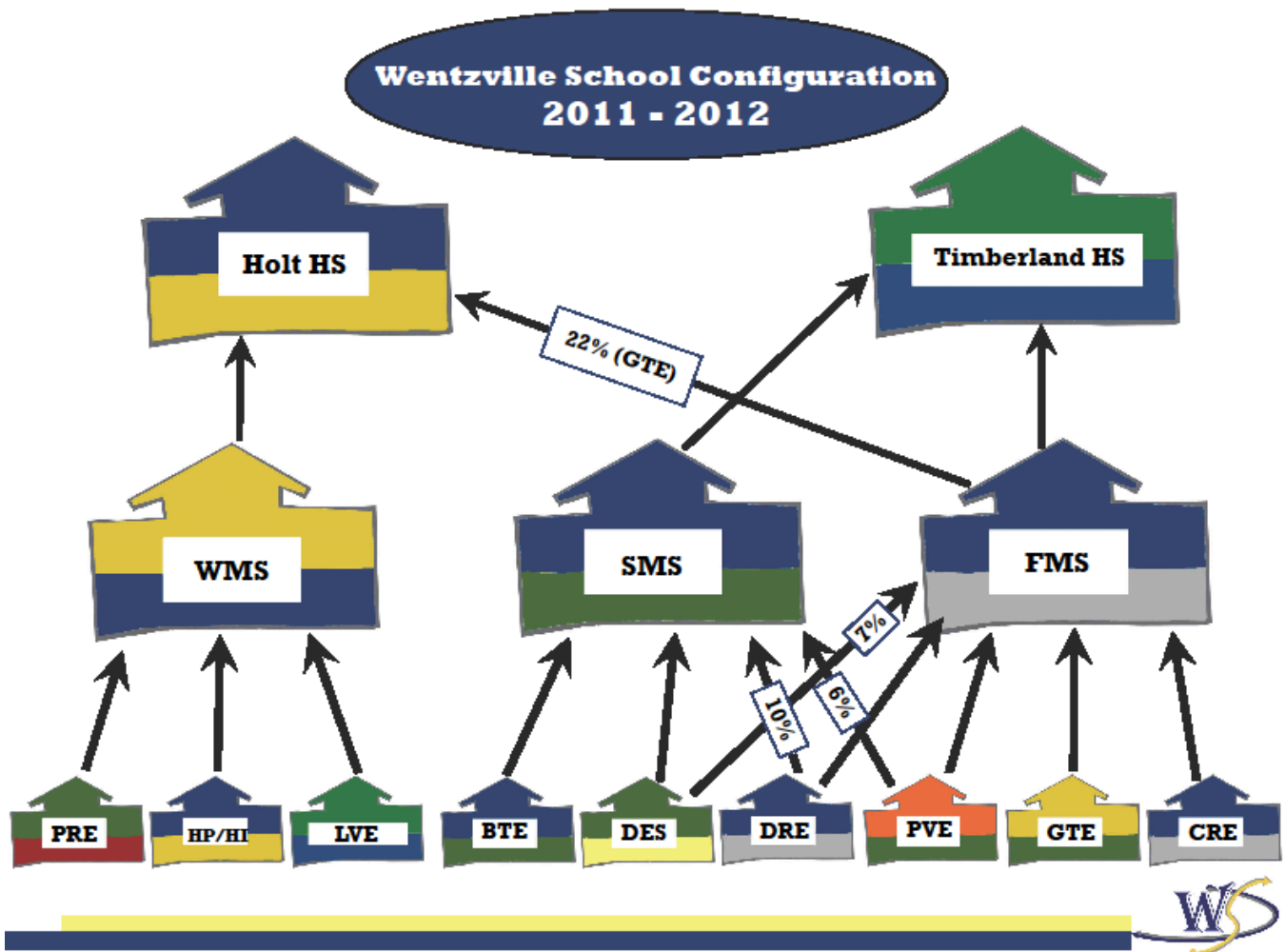
- Assign three elementary schools to attend a specific middle school beginning in the fall of 2012
 - The Heritage Campus will be considered one elementary school for the purpose of school assignment.
 - The new assignments will take effect as the current fifth graders move into sixth grade for the fall 2012.

The assignment criteria were as follows:

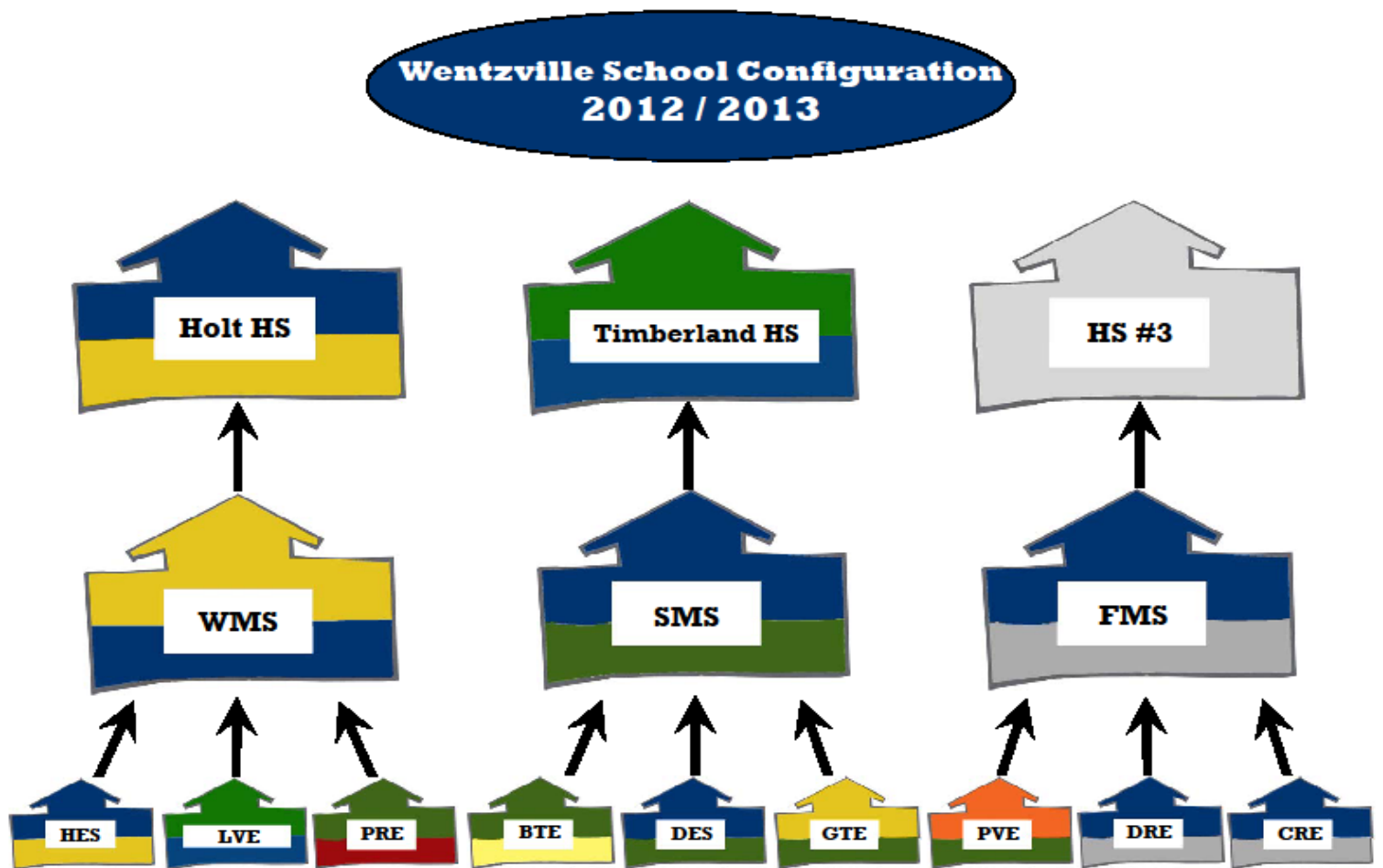
- Demographic Considerations
 - To the extent possible, the student body of each middle school should be reflective of the community and aligned throughout the District.
 - To the extent possible, the student body of each high school should be reflective of the community and aligned throughout the District.
- Feeder System Considerations
 - Beginning with the sixth grade class in the fall of 2012, all students residing within an elementary school boundary (in grades six, seven and eight), will feed into a select middle school.
 - Beginning in the fall of 2013, there will be three high schools with the following “feeder” system in place:
 - Wentzville Middle School students will attend Holt High School
 - South Middle School students will attend Timberland High School
 - Frontier Middle School students will attend the new high school
 - (Freshmen only in 2013-2014)

- Transportation Considerations
 - Distance, transportation time, and routing should be considered and minimized where possible, in formulating middle school assignments.
- Additional Parameters
 - Middle school students will not be “grandfathered” into their current school. Students and parents will be able to utilize the District’s currently defined intra-district transfer process.
 - The School Assignment Committee must design a proposal that fits the defined charge and generally meets the outlined goals.

The school assignment diagram for the current school year looks like this:



After several meetings and careful consideration of the charge, the School Assignment Committee has recommended the following school assignments beginning next fall:

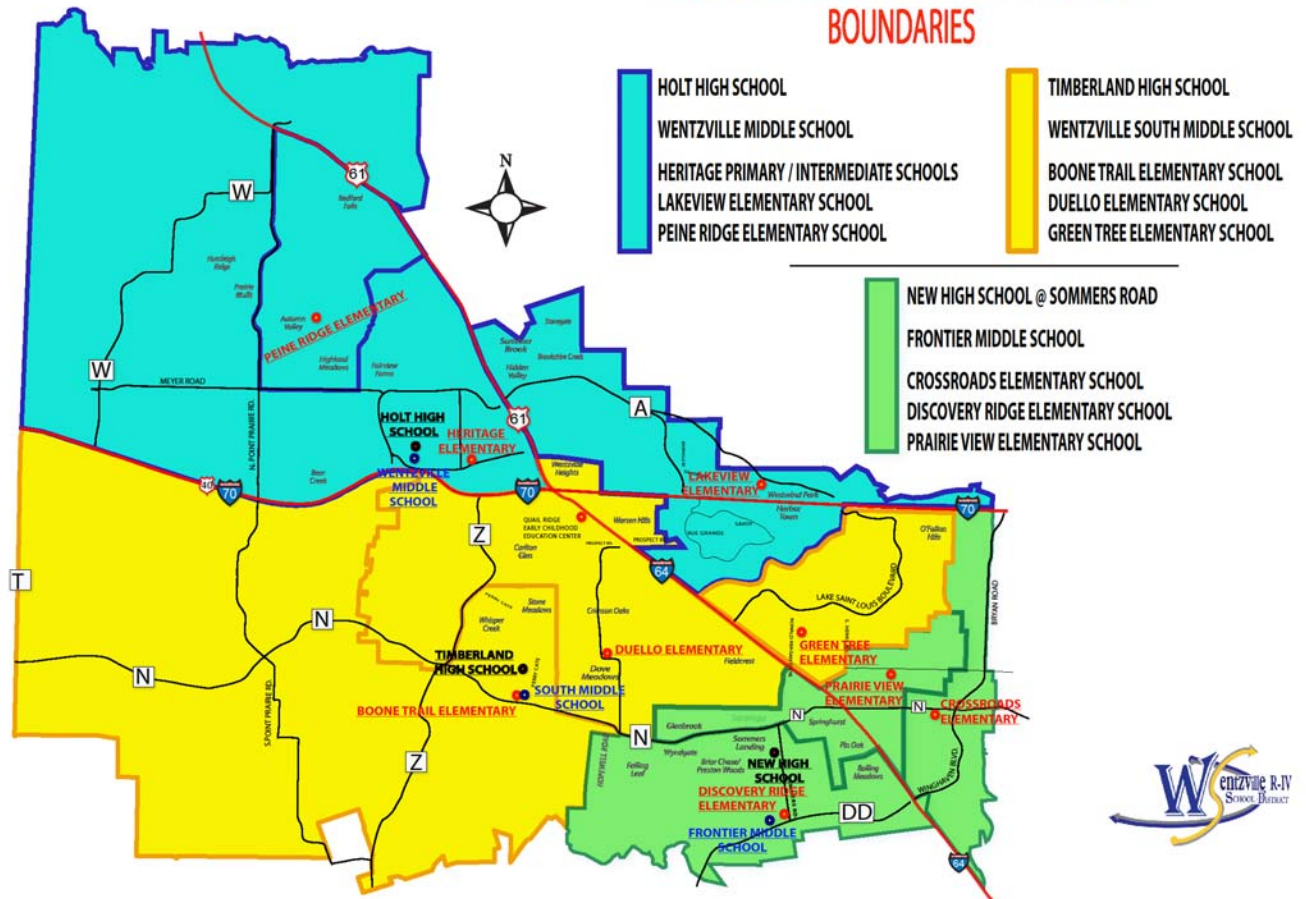


These changes would mean that for the 2012-13 school year all current 5th graders at Boone Trail, Duello and Green Tree Elementary would attend South Middle School, and all current 5th graders at Crossroads, Prairie View and Discovery Ridge Elementary would attend Frontier Middle School. The recommendations would also mean that current 6th and 7th graders at Frontier Middle School who live in the Duello or Green Tree Elementary attendance areas would attend South Middle School, and current 6th and 7th graders that attend South Middle School and live in the Prairie View and Discovery Ridge Elementary attendance areas would attend Frontier Middle School beginning in the 2012-13 school year. The current 8th grade students at Frontier would still attend the high school to which they were previously assigned. The 2012-13 Frontier Middle School 8th grade class would become the freshman class of the new high school in 2013-14. Students already in high school would not be asked to change schools.

Here is a map of the Wentzville School District that reflects these proposed changes for the 2012-13 school year.

WENTZVILLE R-IV SCHOOL DISTRICT

PROPOSED HIGH SCHOOL - MIDDLE SCHOOL BOUNDARIES



The District will hold three “Open House” sessions in the coming weeks to answer questions and get feedback and comments from our parents and our school community. There will not be a formal presentation, but District administrators will be available to answer questions and explain the process. The final proposal will go to the Board of Education for approval in early 2012. Questions can also be directed to the Administrative Services Department at 636-327-3800 ext. 20330 or info@wentzville.k12.mo.us.

Open House Schedule

- Holt/Wentzville Middle/Heritage, Lakeview, and Peine Ridge Elementary
Thursday, December 8, Holt High School cafeteria @ 7:00 p.m.
- Timberland/South Middle/Boone Trail, Duello, and Green Tree Elementary
Monday, December 12, Timberland High School commons @ 7:00 p.m.
- New High School/ Frontier Middle/Prairie View, Discovery Ridge, and Crossroads Elementary
Wednesday, December 14, Frontier Middle School cafeteria @ 7:00 p.m.